

## HI-200KW-230-X - LED OBSTRUCTION LIGHT

### 230V<sub>ac</sub> High Intensity ICAO Type A 200,000cd Obstruction Light

#### Key Features

- Based on LED Technology
- 200,000 / 20,000 / 2,000cd effective flashing white
- 120° x 3° beam spread
- Extremely reliable - long lifetime
- Maintenance free
- Very low power consumption
- 230V<sub>ac</sub> nominal operating voltage
- Stabilised light output
- Lightweight and small - low wind load factor
- Easy to install
- Control by Obelux LHC (light head controller)
- Five (5) year warranty

#### Benefits

- Low cost of ownership
- Low wind load
- Supply voltage variations do not effect light output
- Over 10 year continuous maintenance free operating time

#### Specifications Met

- ICAO International standards and Recommend Practices Aerodrome - Annex 14 Vol 1, 5th Edition, July 1999, Chap 6: high intensity, Type A Fixed Obstacle Light.

#### Photometric Characteristics

- 200,000cd effective day mode
- 20,000 cd effective twilight mode
- 2,000 cd effective night mode
- Colour aviation white
- Horizontal radiation pattern 120°
- Vertical radiation pattern 3°
- Current for the LEDs is stabilised by a CCG



#### Electrical Characteristics

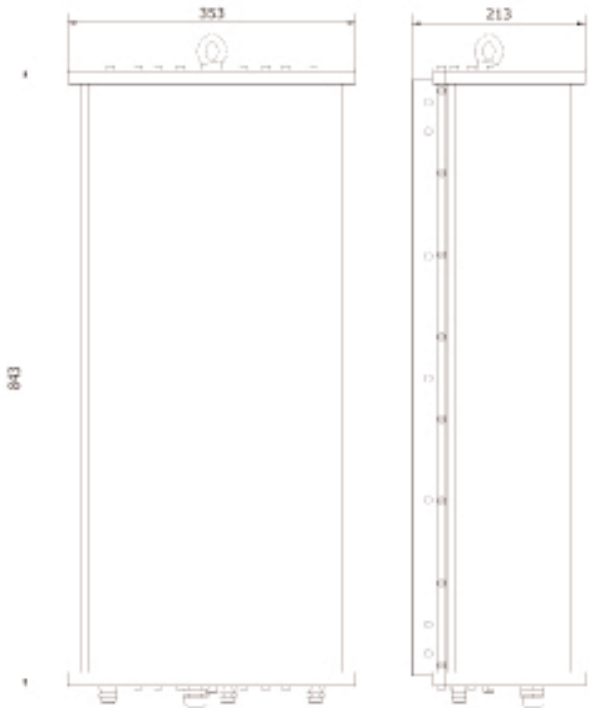
- Nominal power consumption , 40 fpm, 250 ms flash duration - day mode 250w / twilight mode 88w / night mode 27w
- Maximum power cable length 10m, up to 50m as an option

#### Mechanical Characteristics

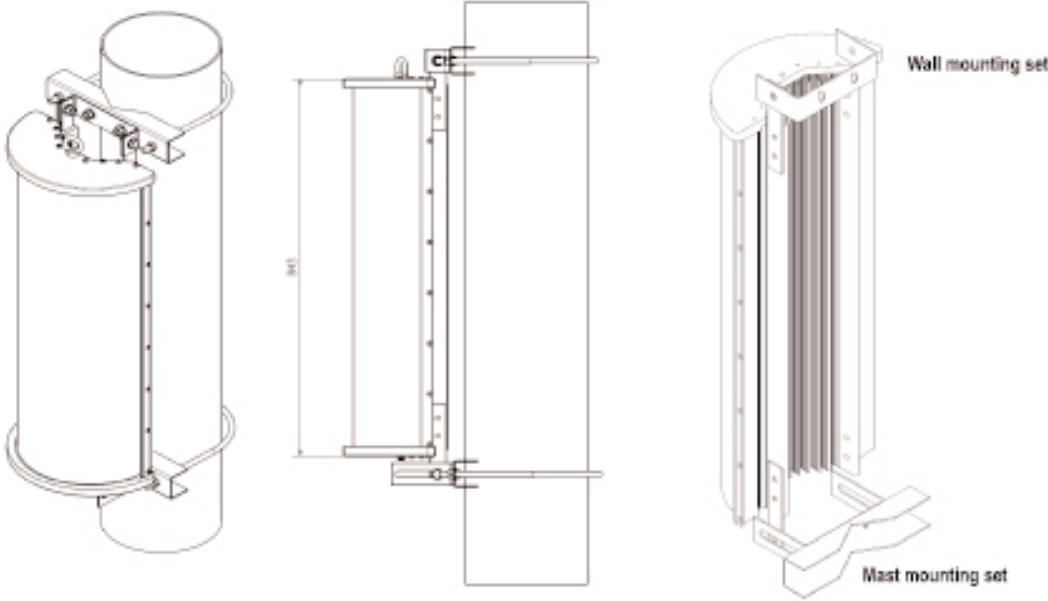
- Marine grade aluminium enclosure
- Glass cover
- Degree of protection IP 65
- Operating temperature range -55° to +55°C
- Height 843mm, width 353mm, depth 213mm
- Height 973mm with mounting set
- Weight 27Kg, less than 35Kg with mounting set
- Wind load @ 200Km/h less than 1000 N
- Wind load with mounting set @ 500 N @ 200 km/h

**HI-200KW-230-X - LED OBSTRUCTION LIGHT**

**LH mechanical dimensions**



**LH mechanical mounting examples**



All mounting parts are hot dip galvanised steel